

PC Installation Instructions

Please read these instructions carefully before installing.

It is strongly recommended that Vista users do not install Dynamic Learning to the default Program Files folder, especially if the title contains the Assessment Engine, as Vista's virtualisation of the Program Files folder will cause problems.

Please note that *'the title folder'* and *[this DL Title]* have been used throughout this document instead of the name of the title itself, e.g. *'Religion and Life'* or *'ICT InteraCT 1'*.

Basic install

- The disc should auto-run on insertion into your drive.

If it does not, click the Windows 'Start' button, choose 'Run', and type:

D:\start.exe (where D is the letter of your CD-ROM/DVD-ROM drive)

The application will then start, displaying the five installation options:

- **Evaluate from disc**
 - **Install Dynamic Learning Engine v1.x.x**
 - **Install [this DL Title]. A code from dynamiclearningsales@hodder.co.uk is required**
 - **Site licence**
 - **Installation instructions**
- Choosing **Evaluate from disc** will launch the product directly from the CD-ROM/DVD-ROM. Neither the Dynamic Learning Engine nor the title will be installed.
 - To fully install the product, first install the Dynamic Learning Engine to the relevant drive. A shortcut will be placed in the Start menu under 'Hodder Education -> Dynamic Learning', and on the Desktop.
 - Once installation of the Engine is complete (or if the Engine has previously been installed) install [this DL title] to your preferred location. **A unique title code is required, which is available from dynamiclearningsales@hodder.co.uk upon proof of purchase.**
 - If the title is installed to the same location as the Dynamic Learning Engine it will automatically be detected the next time the application is run.

If the title is installed to a different location it will be necessary to run the **Admin Console** (installed with the Engine) and select the 'Add External Title' option. Then browse to the title folder and confirm that you wish to add it to the list of titles mapped to the Engine. The next time the Dynamic Learning application is run this title will be available to users. See the Technical Help document for details.

- Some titles include the **Assessment Engine**, a simple tool for administering interactive tests. See below for extra information about installing these titles.

Please note that the Assessment Engine needs to write data to a database. It is therefore not possible to try out all of its features in "Evaluate from disc" mode.

You cannot log in to the Assessment Engine as a student when evaluating from the disc, as no student login has been set up. You must log in as a Teacher to preview the tests.

If the title contains the Assessment Engine, the disc's splash screen will say so.

PC Network Install

- There are three options for a network install:
 1. Install both engine and content (titles) on a public server and let clients access both remotely. This is the recommended option as it is likely to be the simplest.
 2. Install the content on a public server but install the engine on each client machine.
 3. Install both engine and content separately on each client.
- For option 1, follow the standalone instructions above, but install to a shared location or locations on the server. Then send a shortcut to 'Dynamic Learning.exe' to client machines using your chosen distribution system. **If installation is manual, note that the Engine and Admin folders and contained files must be set to 'Read only', or errors will result when more than one user at a time tries to access the program.**
- For option 2, install the title to the server. Then install the Engine on each client machine and use the Admin Console to point to the content on the server. The location of the content is stored in the hidden file `..\Dynamic Learning Engine\Admin\other\Settings.xml`, so it can be pushed out to client machines if necessary.
- For option 3 you may need to use your preferred distribution mechanism to create a package which can be distributed to the required client machines.

RM CC3 Install

- Using the MSI provided, install the Dynamic Learning Engine to:
`P:\Hodder Education\Dynamic Learning`. Note that the Engine and Admin folders and the files they contain must be 'read only'. The installer should automatically do this.
- Using the other MSI, install the title to the same folder:
`P:\Hodder Education\Dynamic Learning\Germany 1918-1945 (for example)`
- In the RM Management Console, go to Configuration Settings, then Software Restriction Settings. Select the File Rules radio button. Right-click and choose 'New file rule...', then browse to the Dynamic Learning Engine executable and choose to allow the file to be run. Add a description.
- You don't need to create a file rule for the Admin Console executable, as only administrators should run it.
- Next, on a workstation, go to
`X:\Group Resources\Shortcut Bank`.
Right-click to add a shortcut, then browse to:
`P:\Hodder Education\Dynamic Learning\Engine\Dynamic Learning.exe`.
- In the Management Console, choose Resources, then Program Sets. Double-click on the program set you want to use, or create a new one. Then, in the Source, choose 'Shortcut Bank' and add the Dynamic Learning shortcut. All users should receive the shortcut at their next logon.
- The client machines will need to be rebooted before DL will work.

The Dynamic Learning Admin Console

The Dynamic Learning Admin Console provides network administrators with a number of useful utilities with which to manage Dynamic Learning titles. The Admin Console is installed with the Engine, but a shortcut for users is not created. This is so that only network / PC administrators access the functions within the Admin Console.

In order to launch the Admin Console, users with the necessary administrative privileges can browse to where the Dynamic Learning Engine has been installed (by default, C:\Program Files\Hodder Education\Dynamic Learning\Admin) and, ensuring that Dynamic Learning itself is not already running, double-click 'Admin Console.exe'. This will allow the administrator to:

- Map Dynamic Learning titles which have been installed to a location different from the Dynamic Learning Engine, to the Engine
- Change teacher passwords for individual titles
- Change teacher passwords for all Dynamic Learning titles
- Change teacher passwords for all titles in a series
- Create content packs for Learning Platforms
- Change the location to which Dynamic Learning writes data
- Change the location of titles' Assessment Engines databases, if present

See the Technical Help PDF file provided at the root of the disc for more details on how the Admin Console works.

Instructions for Mac installation are in a separate document on the Mac partition of this disc.

Please see www.dynamic-learning.co.uk for the latest information about Dynamic Learning and the most recent version of the Engine.

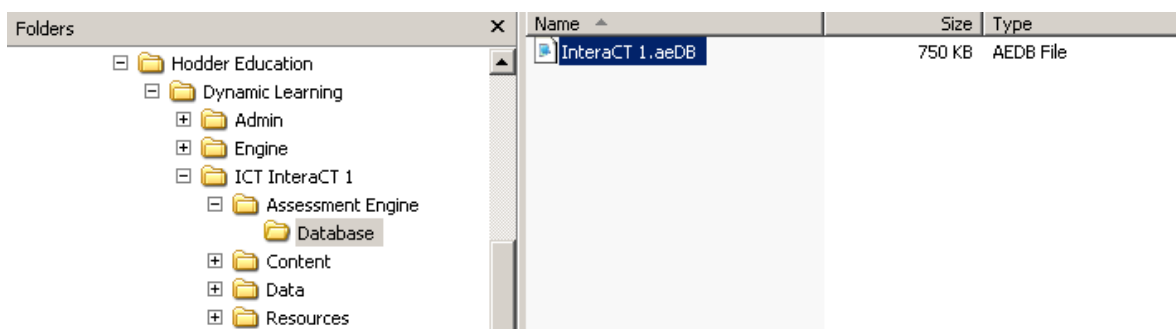
The Assessment Engine

Some Dynamic Learning titles – for instance the ICT InterACT series – feature the **Assessment Engine**, a tool which records students' responses to tests. The Assessment Engine stores questions and user data in a database within the title folder. Either the entire title folder ('ICT InterACT 1', for instance), or just the database itself, must be installed to a location accessible by all the students, and you must ensure that certain files and folders receive certain permissions.

The default location for the title and the database is inside C:\Program Files\Hodder Education\Dynamic Learning\, but this can be changed using the Admin Console. Please see the Technical Help PDF on this disc for details.

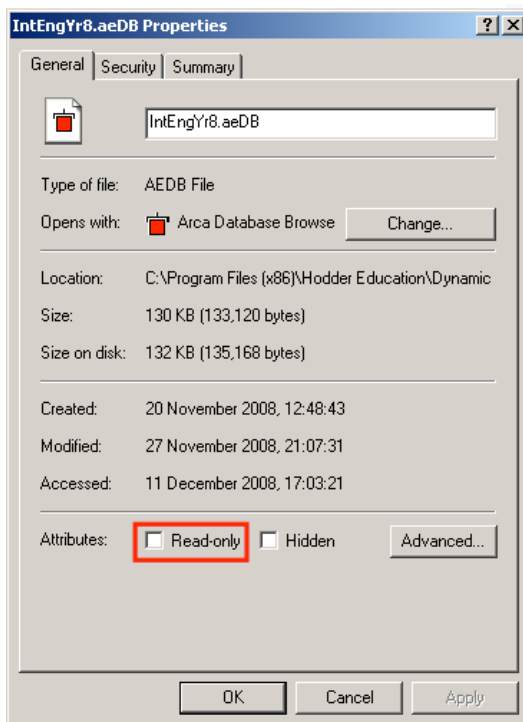
It is strongly recommended that Windows Vista users do not install titles containing the Assessment Engine to the Program Files folder, as Vista's virtualisation of this folder can make relocation of the database difficult or impossible and the saving of data unreliable.

Please ensure that the following file attributes and permissions are set.

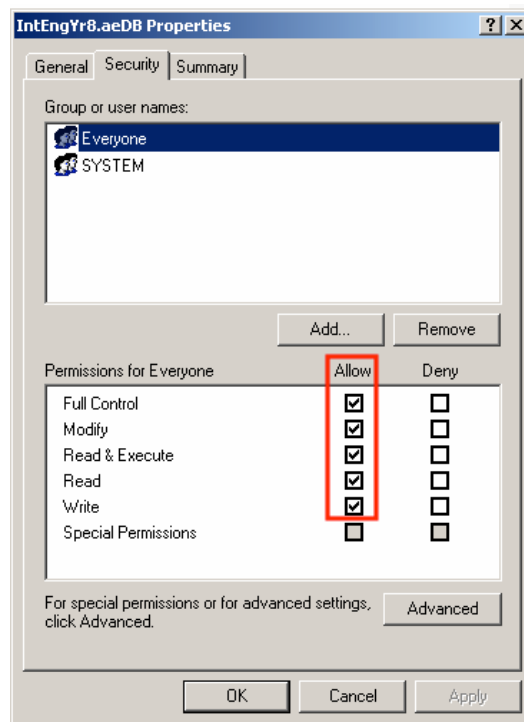


The .aeDB file in the <title>/Assessment Engine/Database folder (shown above) must **not** have its read-only attribute set.

In addition, **all users** must have **full control** of the .aeDB. You must also ensure that more restrictive permissions are not inherited from containing drives, folders, or group policy. If the permissions are wrong, users will see an error message when they try to use the interactive tests.

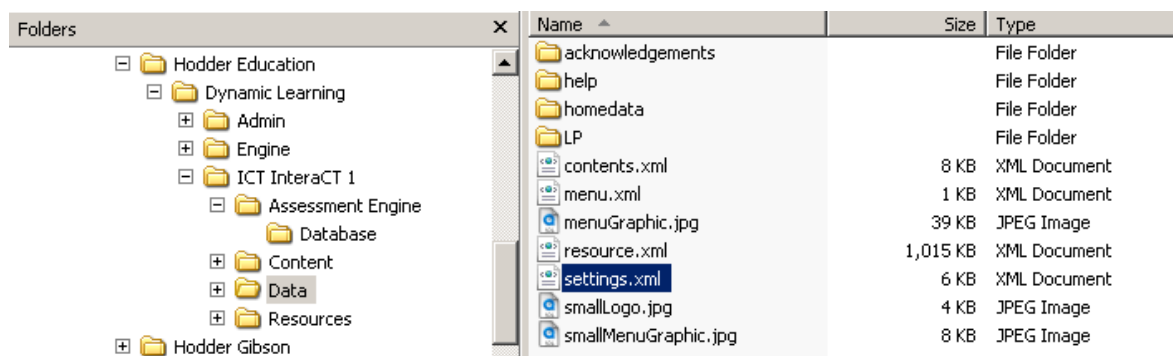


Read-only file attribute



Security permissions

The administrator must have **write access** to the **settings.xml** file within the title:

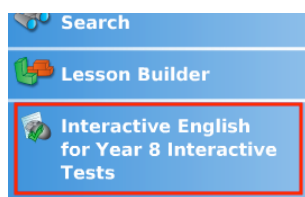


The settings.xml file contains the path to the .aeDB database file, amongst other things.

If you have installed the title folder to each client PC you will need to make sure all of these particular settings.xml files contain the path to the .aeDB on a shared drive. This is best done by performing the install on a clean machine, moving the .aeDB to a shared drive, using the Admin Console to map to it, then taking an image of the resultant installation to push out to clients. It is usually better/simpler to install both title and Engine to a shared drive.

We suggest that after you have installed a Dynamic Learning title containing an Assessment Engine you test that the database has been installed properly and can be accessed by students.

To do this, log on to a client PC as a student. Launch Dynamic Learning and log in to the program as a teacher (the default password is given in the accompanying booklet, or can be discovered by using the Admin Console). Launch the Assessment Engine from the “Interactive Tests” link:



Use the tools provided to create a dummy student username and pass. Log out of the title and log back in as a student (no password is required to log into DL itself as a student). When you try to launch the Assessment Engine as a student, you *will* be asked for the username and pass: enter the ones you’ve just created. Then take a test and ensure that the results are saved. Error messages usually denote a problem with the permissions on the .aeDB file or files.

Note that for titles in series, such as the *InterACT* series or *Interactive English*, the .aeDBs contain question data unique to that title, but student login data and the results of tests taken are synchronised between the .aeDB files. You must therefore ensure that *all* .aeDB files are set up with the correct permissions and file attributes. Failure to do so may result in error messages and duplicated or corrupt data.

Do not attempt to manually edit the xml files.

Do not rename the .aeDB files.

Because write access to the database is required, it is not possible to preview all aspects of the Assessment Engine from a locked disc.

If the title contains the Assessment Engine, the disc’s splash screen will say so.

Please see www.dynamic-learning.co.uk/faq for more information about the Assessment Engine.